

Anti-STEAP1 hIgG1 Reference Antibody (Vandbio)

Product Information

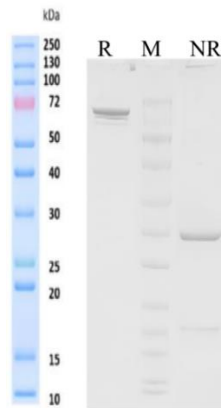
Product Name	Anti-STEAP1 hIgG1 Reference Antibody (Vandbio)
Storage temp.	Store at 2-8°C short term (1-2 weeks).Store at $\leq -20^{\circ}\text{C}$ long term. Avoid repeated freeze-thaw.
Catalog# / Size	GM-87355MAB-1mg / 1 mg GM-87355MAB-5mg / 5 mg GM-87355MAB-25mg / 25 mg GM-87355MAB-50mg / 50 mg GM-87355MAB-100mg / 100 mg

Antibody Information

Expression System	CHO
Aggregation	< 5% as determined by SEC-HPLC
Purity	> 95% as determined by SDS-PAGE
Endotoxin	< 1 EU/mg, determined by LAL gel clotting assay
Sterility	0.2 μm Filtered
Target	STEAP1
Clone	Vandortuzumab
Alternative Names	PRSS24, STEAP
Source/Isotype	Human IgG1 (KEEM), Kappa
Application	Flow cytometry;
Description	The STEAP1 (Six-Transmembrane Epithelial Antigen of Prostate 1) gene is a gene that is highly expressed in prostate tissue and belongs to a family of six-transmembrane proteins. The main functions of STEAP1 are associated with the transport across the cell membrane, signal transduction, and interactions between cells. This gene is predominantly expressed in prostate tissue, and is found to be upregulated in multiple cancer cell lines.
Formulation	phosphate-buffered solution, pH 7.4.

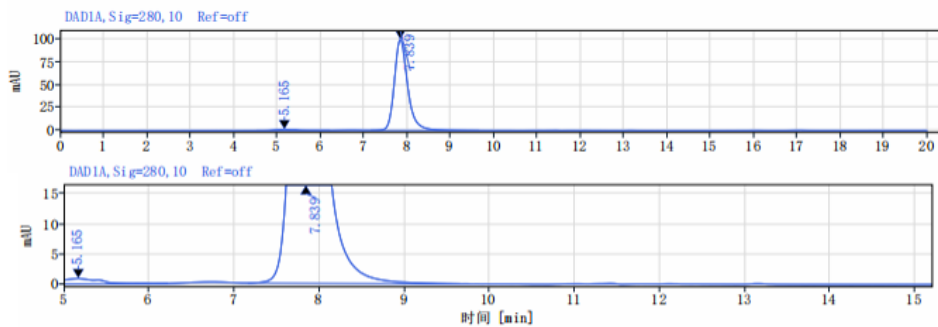
Data Examples

SDS-PAGE



On SDS-PAGE under reducing (R)/non-reducing(N-R) condition. The gel was stained overnight with Coomassie Blue. The purity of the protein is greater than 95%.

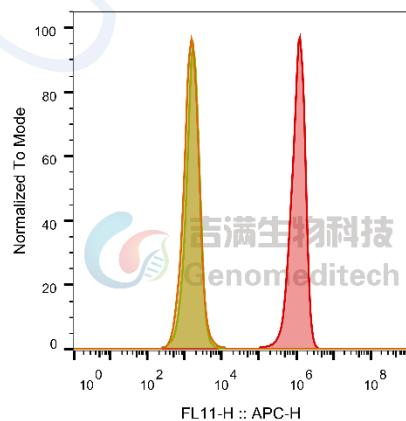
SEC-HPLC



The purity of this product is more than 95% verified by SEC-HPLC

Flow cytometry

H_STEAP1 HEK-293 Cell Line (Catalog # GM-C21520) was stained with Anti-STEAP1 hlgG1 Reference Antibody (Vandbio) (Catalog # GM-87355MAB) or isotype control antibody, followed by anti-Human IgG APC-conjugated Secondary Antibody.



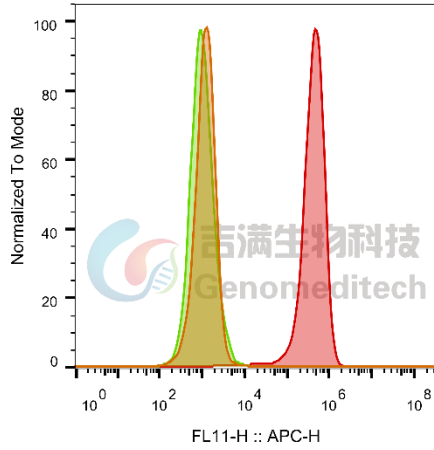
SampleID	Geometric Mean : FL11-H
HEK-293 anti-STEAP1+APC-2nd Ab	1560
HEK-293 H_STEAP1 H_IgG+APC-2nd Ab	1660
HEK-293 H_STEAP1 anti-STEAP1+APC-2nd Ab	1.08E6

Fig. FACS

Version:3.2

Flow cytometry

H_STEAP1 CHO-K1 Cell Line (Catalog # GM-C21519) was stained with Anti-STEAP1 hlgG1 Reference Antibody (Vandbio) (Catalog # GM-87355MAB) or isotype control antibody, followed by anti-Human IgG APC-conjugated Secondary Antibody.

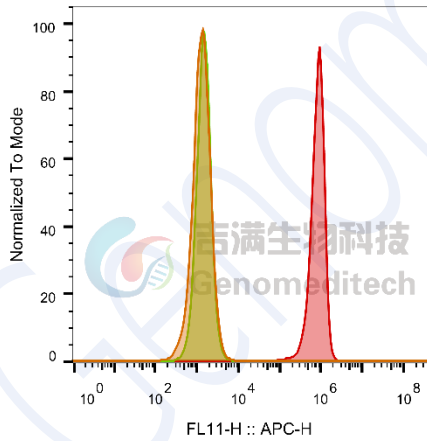


SampleID	Geometric Mean : FL11-H
CHO-K1 anti-STEAP1+APC-2nd Ab	1162
CHO-K1 H_STEAP1 H_IgG+APC-2nd Ab	1011
CHO-K1 H_STEAP1 anti-STEAP1+APC-2nd Ab	396581

Fig. FACS

Flow cytometry

Cynomolgus_STEAP1 CHO-K1 Cell Line (Catalog # GM-C21521) was stained with Anti-STEAP1 hlgG1 Reference Antibody (Vandbio) (Catalog # GM-87355MAB) or isotype control antibody, followed by anti-Human IgG APC-conjugated Secondary Antibody.



SampleID	Geometric Mean : FL11-H
CHO-K1 anti-STEAP1+APC-2nd Ab	1277
CHO-K1 Cyno_STEAP1 H_IgG+APC-2nd Ab	1487
CHO-K1 Cyno_STEAP1 anti-STEAP1+APC-2nd Ab	7.96E5

Fig. FACS